



LiveData, Inc.
1030 Massachusetts Ave.
Cambridge, MA 02138
1-800-570-6211
www.livedata.com

The Smart Integration Company

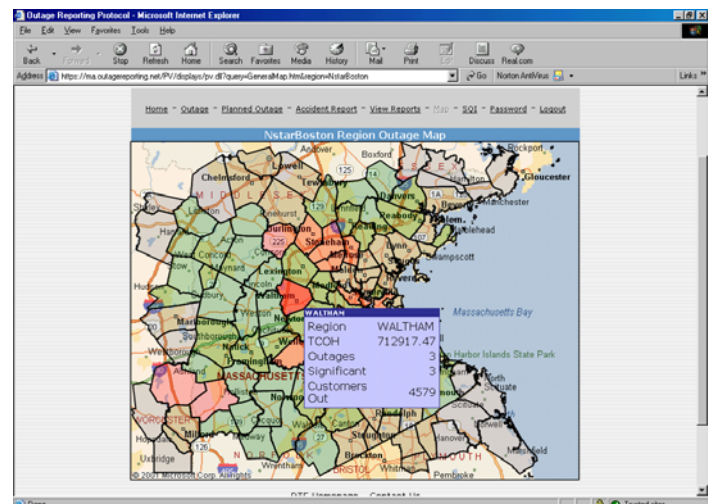
LiveData, Inc. is pleased to introduce its next generation of real-time monitoring, executive dashboard, and data historian solutions: LiveData RTI Release 5.0. Advancing LiveData's unique real-time integration architecture, LiveData RTI Release 5.0 is the first in a new category of technology called "smart integration." Smart integration addresses the six key problems in integrating real-time systems by giving users the ability to:

- Establish real-time, bi-directional data flows between any intelligent device, application and IT system
- Monitor and respond in real-time to rapidly changing, complex combinations of operational and IT conditions
- Visualize the current state of complex situations, through highly graphic, continuously updated, web-based dashboards
- Synthesize all of the information relevant to a given situation, bridging the gap between real-time operations and IT
- Archive real-time data with precise time synchronization, so that any operation or occurrence can be recreated and analyzed at any time
- Easily understand and change rules for data flow, analysis and response.

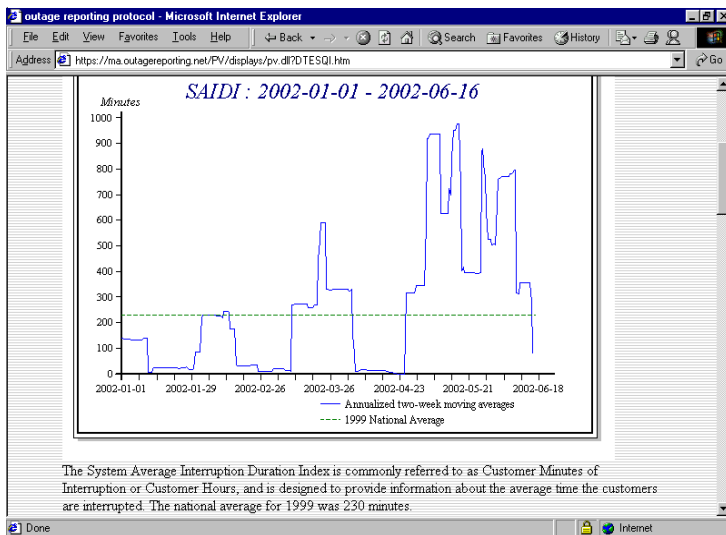
The LiveData Product Family

LiveData RTI (Real-Time Integration) Server collects, transforms, and delivers real-time data flows, from tens, thousands, or hundreds of thousands of points, to diverse systems that need and act on that data. It also functions as a full application server, supporting and orchestrating applications that operate on real-time data as it flows. LiveData RTI Server enables customers to continually monitor data against defined rules or conditions, to trigger actions, and to interact with other applications. LiveData RTI Server includes the LiveData Protocol Server and provides the software platform for LiveData Historian and LiveData Dashboard.

LiveData Protocol Server (formerly the LiveData ICCP Server) is for those decision makers whose needs are limited to a few protocols and don't need the full power of the LiveData RTI Server. LiveData Protocol Servers work as universal real-time data hubs, spanning diverse source and destination protocols and data structures. A graphical user interface simplifies the process of configuring data flows, utilizing a highly visual, point-and-click process to map data source to destination. LiveData supports all major utility protocols, including ICCP / TASE .2, OPC / IEC 61850, DNP 3.0, and MultiSpeak. LiveData also supports numerous proprietary protocols, including Modbus, Modbus Plus, PG&E, and Allen-Bradley.



Regional outage information from LiveData Dashboard



LiveData Dashboard present key performance indicators

The LiveData RTI Application

Development environment, delivered with the LiveData RTI Server, dramatically speeds application development, integration, and implementation. LiveData supports industry standards and open interfaces, including XML / SOAP / Web Services, facilitating the use of third-party applications and tools. Leading scripting languages and development environments are supported, including Python, VBScript, JavaScript, Perl and .NET. Built-in functions provide a broad range of data operations, including polling, queuing, flow control, event handling, time stamping, on-the-fly batching, and database connection retry.

LiveData Historian allows customers to archive real-time data easily and efficiently. Decision makers can accurately recreate and diagnose a major event; use historical data to build better forecasts; and analyze cumulative data patterns.

A point-and-click user interface makes it easy to select the data elements to archive, and to specify time resolution and duration. Time series resolution can be exceptionally fine (less than 1 millisecond). High performance software supports simultaneous archiving of as many as 100,000 points.

Data is stored in an open standard format, HDF5 (adopted for high performance data analysis by the U.S. Government at the National Center for Supercomputing), and is readily queried by third-party applications using SQL. Data security features include a cryptographic seal that protects against data tampering. LiveData Historian supports LiveData Dashboard graphical representation, enabling quick and easy visual analysis of historical data.

LiveData Dashboard presents mission-critical data to executives and operations managers who need to know what is happening *now*. Dashboards are highly visual representations of key information that a given user needs. They may include bar charts, graphs, tables, special message boxes, or other customized views. Authorized users view their dashboards from any PC or Web-enabled device with secure access to the enterprise intranet. LiveData Dashboard works with any web browser and requires no client-side installation.

An easy-to-use configuration tool enables rapid dashboard creation (minutes, from start to finish), customized to meet the needs of the target individual or group. Views can be updated as frequently as every second. Conditions and thresholds can be added that call for a response or generate notifications, such as data calls to cell phones or flashing dashboard displays. To provide visual perspective, LiveData Dashboard can also display historical data, available from LiveData Historian.

About LiveData

LiveData, Inc. is the leading innovator of smart integration technology, addressing the real-time data, application, and process integration needs of mission-critical operations. LiveData solutions continuously monitor, synthesize, and respond to highly complex, multi-faceted processes, spanning hundreds to tens of thousands of devices, diverse protocols, systems, and databases. Customers include Fortune 1000 energy companies and utilities, manufacturers, leading health care institutions, and state and local governments. Founded in 1991 and headquartered in Cambridge, Massachusetts, LiveData is privately held.